



ADDRESS: C/ Miño, 16-18 // Polígono Industrial Conmar  
Ajalvir // 28864 // Madrid // Spain

T.N: +34 918 843 846  
FAX: +34 918 843 865

marketing@rotorbike.com



ROTOR COMPONENTES TECNOLÓGICOS

rotorbike.com

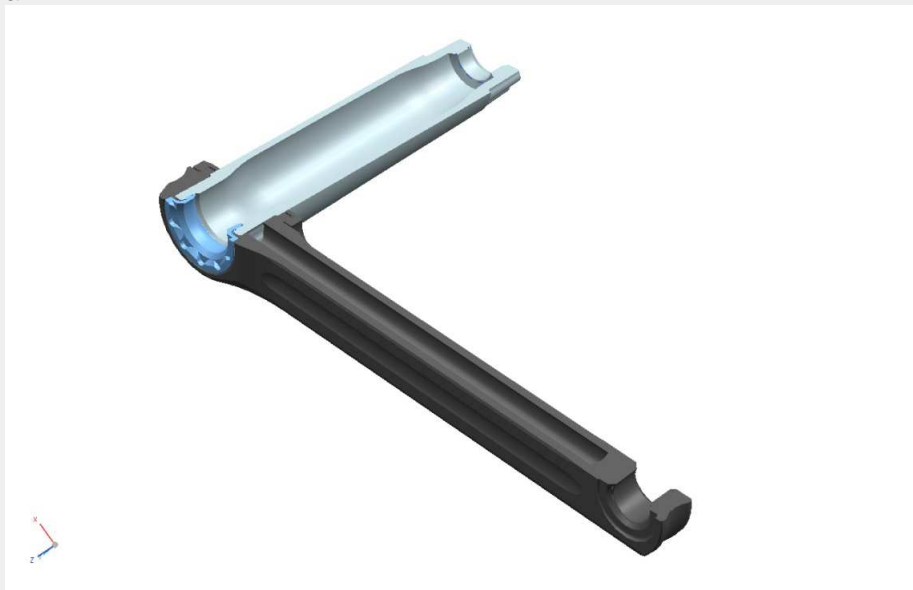
### ROTOR 3D30 CRANKS

ROTOR Bike Components has developed a specific BB30 & BBright crankset based on its successful 3D crank, to be the perfect complement for Cervélo's R5California frame, yet 100% compatible with any BB30 or BB24 bike (using special ROTOR "BSA30" BB cups) on the market!

- ROTOR 3D30 crank: a light-weight, purebred performance aluminium crank: 467g for 172.5/130 bcd (w/o BB and chainrings).The compact version saves 6 grams in regards to 130.



- 3D30 cranks have an improved version of our proprietary "Trinity Drilling System" technology. Due to the larger axle-crank contact area of a BB30 crank, all three holes can be drilled from the axle side of the crank arm, allowing for further optimisation of wall thicknesses, improving both the weight and the weight-rigidity ratio of the crank arm.





ADDRESS: C/ Miño, 16-18 // Polígono Industrial Conmar  
Ajalvir // 28864 // Madrid // Spain

T.N: +34 918 843 846  
FAX: +34 918 843 865

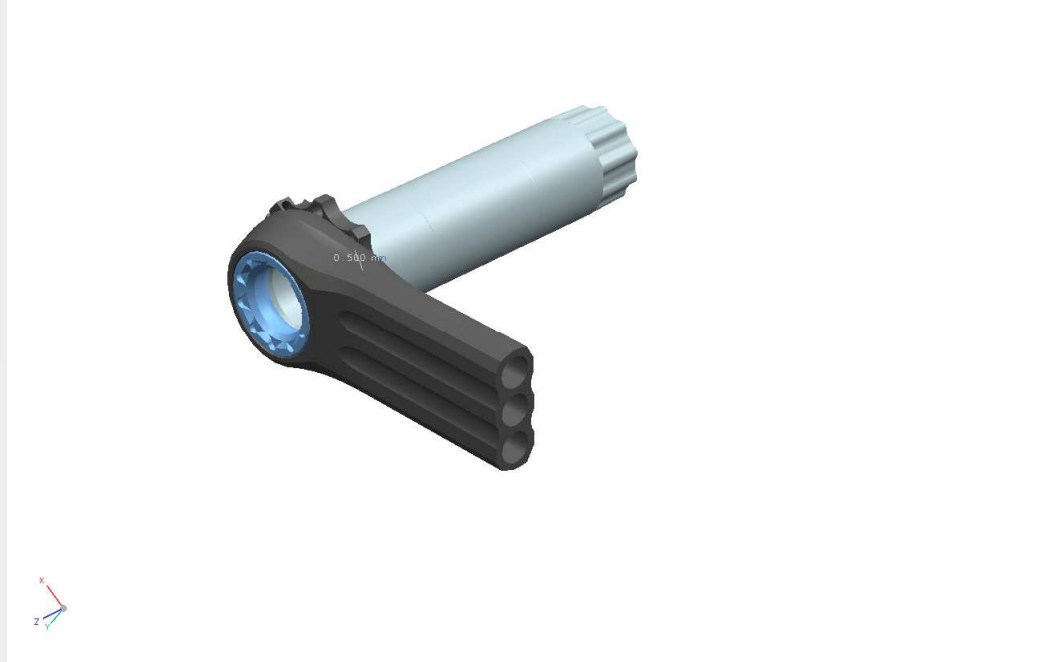
marketing@rotorbike.com



ROTOR COMPONENTES TECNOLÓGICOS

rotorbike.com

- Certified to the **EN 14781** standard (having exceeded the resistance requirement by double the amount of fatigue cycles!)



#### ROTOR 3D30 main features

Lightweight: 467gr (172.5/130bcd).

Aluminium axle (30mm diameter)

High precision bearing pre-load adjustability through a compression ring with locknut.

100% Compatible with:

- R5California BBright specification.
- BB30 frames (68mm BB width)
- Classic frames for BB24 cranks, using ROTOR "BSA30" BB cups which allow the use of a BB30 crank.

Commercially available as of Eurobike (9/2010).